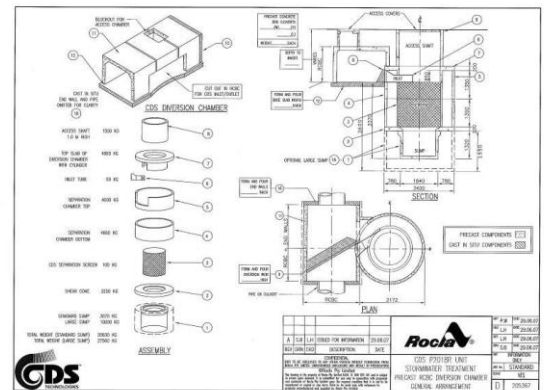


# AVENUE ROAD GPT



**LOCATION**

Avenue Road,  
Campbelltown

**CONTRACT VALUE**

\$170,000

**CONSTRUCTION PERIOD**

January 2012 - April 2012

**FORM OF CONTRACT**

AS2124-1992

**CLIENT**

City of Campbelltown

**PROJECT SUPERVISOR:**

Andrew Cameron

**REFEREE**

Clive Harrington  
City of Campbelltown  
Ph: 0419 823 703

**DESCRIPTION OF PROJECT:**

Installation of a large gross pollutant trap on a high volume, high flow 900mm RCP in Campbelltown. The ROCLA Gross Pollutant Trap (GPT) is a precast unit which required a diversion chamber and weir to be built in the road around the 900mm pipe. The increments were approximately 10t each.

**PROJECT CHALLENGES:**

1. The excavation for the GPT is near an existing residence and road so it could not be benched to the invert. The excavation was mechanically supported. The excavation for the GPT was 7m deep. A single bench was dug for the excavator which had reach of 6.6m so that the excavation could be completed.
2. Telstra Fibre Optic – A Telstra fibre optic cable was directly across our excavation for the large precast unit. The City of Campbelltown sought a quote from Telstra to move the cable prior to the works commencing. The cost was approximately \$35,000 with a 6 week lead time. T & J Constructions provided an alternative propping and protection option and adjusted the design to provide clearance between the new infrastructure and the service. This value added alternative was accepted and allowed the works to progress without incident or delay.

**KEY CONSTRUCTION PROCESSES:**

The Gross Pollutant Trap Installation required traffic management on a highly trafficked residential through road, careful bulk and detailed excavation and mechanical support of earth faces exceeding 5m. Excavation in road and the insitu construction of a concrete diversion chamber. During the works we exposed, propped and protected a Telstra Fibre Optic Cable. The design of the GPT and diversion weir was modified to clear the fibre optic cable. The road and kerb was reinstated to council specification.

- Works involved in the project include;
- Non-complex to moderately complex Traffic Management
  - Service Protection in roads and Excavations
  - Granular and or Asphalt Pavements Pavement Construction
  - Cross and Longitudinal Drainage
  - Moderately Complex Environmental Risk Management
  - General Earthworks Exceeding 5m in cut or Fill
  - Mechanically Stabilised earth construction to a nominal 5m Height