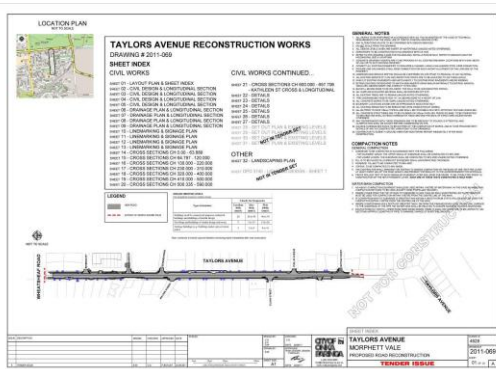


TAYLORS AVENUE RECONSTRUCTION



LOCATION

Taylors Avenue,
Morphett Vale

DESCRIPTION OF PROJECT:

Reconstruction of Taylors Ave (1.3km) with deep lift pavement, installation of new drainage, footpaths, landscaping, concrete bus parking bays and paved wombat crossings in front of the school.

CONTRACT VALUE

\$1,518,990

PROJECT CHALLENGES:

1. Taylors Ave is a highly trafficked road with shops, school, and public transport. To allow for the continual through traffic and minimise traffic on the back streets the project was split into two separate stages. The first stage in front of the school was largely completed during school holidays. The second stage was completed in front of the shops over the shortest time possible as well to minimise the economic impact. During both stages detours were established in conjunction with transport and emergency services to ensure the long buses could get around the turns.

CONSTRUCTION PERIOD

November 2011 - March 2012

2. Deep lift Pavement – Due to the reactive nature of the subgrade and the high traffic loadings a deep lift pavement was specified for Taylors Ave.

FORM OF CONTRACT

AS4906-2002

KEY CONSTRUCTION PROCESSES:

Taylors Avenue Reconstruction was a deeplift road reconstruction over a 1.3km area. Traffic Management was complex as there were multiple stages which required various traffic management processes, including contraflow, stop go, road closures and detours. The pavement was a deep lift with a wearcourse that incorporated a modified Binder (A35P) to handle the reactive subgrade and the heavy vehicle traffic (delivery trucks and buses).

CLIENT

City of Onkaparinga

PROJECT SUPERVISOR:

Trevor Jarred

The road and kerb was reinstated to council specification.

REFEREE

Dawyd Pinter
City of Onkaparinga
Ph: 0414 298 362

- Works involved in the project include;
- Service Adjustment
- Non-complex service relocation
- At grade intersection and channelisation works
- Medium-sized culvert works including precast concrete components
- Granular and or Asphalt Pavements Pavement Construction
- Cross and Longitudinal Drainage R
- Moderately complex worksite traffic management
- Pavement construction using modified materials
- High performance surfacings
- Special foundation and/or subgrade and subsoil drainage treatments
- Moderately complex to complex community/stakeholder management